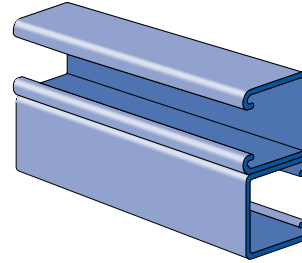
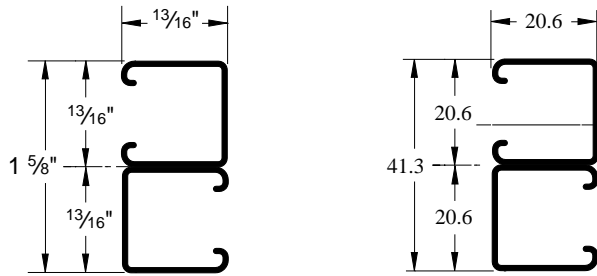




### P6001B

Wt/100 Ft: 73 Lbs (109 kg/100 m)  
 Allowable Moment 1,360 In-Lbs (150 N•m)  
 19 Gauge Nominal Thickness .040" (1.0 mm)



### COLUMN LOADING DATA – P6001

### BEAM LOADING DATA – P6001

Unbraced Height In	Maximum Allowable Load at Slot Face Lbs	Maximum Column Load Applied at C.G.			
		K = 0.65 Lbs	K = 0.80 Lbs	K = 1.0 Lbs	K = 1.2 Lbs
18	1,180	4,570	4,400	4,130	3,820
24	1,130	4,310	4,030	3,600	3,130
30	1,070	4,000	3,600	3,020	2,430
36	1,000	3,650	3,130	2,430	1,780
42	920	3,280	2,660	1,880	1,310
48	840	2,900	2,210	1,440	1,000
54	760	2,520	1,780	1,140	790
60	680	2,150	1,440	920	**
72	550	1,520	1,000	**	**

Span In	Max Allowable Uniform Load Lbs	Defl. at Uniform Load In	Uniform Loading at Deflection		
			Span/180 Lbs	Span/240 Lbs	Span/360 Lbs
18	410 *	0.04	410 *	410 *	410 *
24	410 *	0.06	410 *	410 *	410 *
30	360	0.10	360	360	310
36	300	0.14	300	300	210
42	260	0.19	260	240	160
48	230	0.25	230	180	120
54	200	0.32	190	140	90
60	180	0.39	150	120	80
66	160	0.47	130	100	60
72	150	0.56	110	80	50

#### MATERIAL

Channels are accurately and carefully cold formed to size from low-carbon strip steel.

##### STEEL: PLAIN

19 Gauge (1.0 mm) ASTM A1008

##### STEEL: PRE-GALVANIZED

19 Gauge (1.0 mm) ASTM A653 GR 33

All nuts are manufactured from mild steel bars conforming to ASTM A570 GR 33. Fittings are made from hot rolled, pickled and oiled steel plate or strip and conform to ASTM A1011 SS GR 33.

#### FINISHES

Channels are available in: Perma-Green II (GR), electro-galvanized (EG), Pre-galvanized (PG), conforming to ASTM A653 GR 33 and plain (PL). Nuts are available in plain or electro-galvanized (EG) finish.

Fittings are available in Perma-Green II, electrogalvanized (EG) with zinc electrolytically to commercial standards ASTM B653-G90 Type III SC1; or plain.

Project: \_\_\_\_\_

Approval Stamp:

Architect / Engineer: \_\_\_\_\_

Date: \_\_\_\_\_ Phone: \_\_\_\_\_

Contractor: \_\_\_\_\_

Address: \_\_\_\_\_

Notes 1: \_\_\_\_\_

Notes 2: \_\_\_\_\_